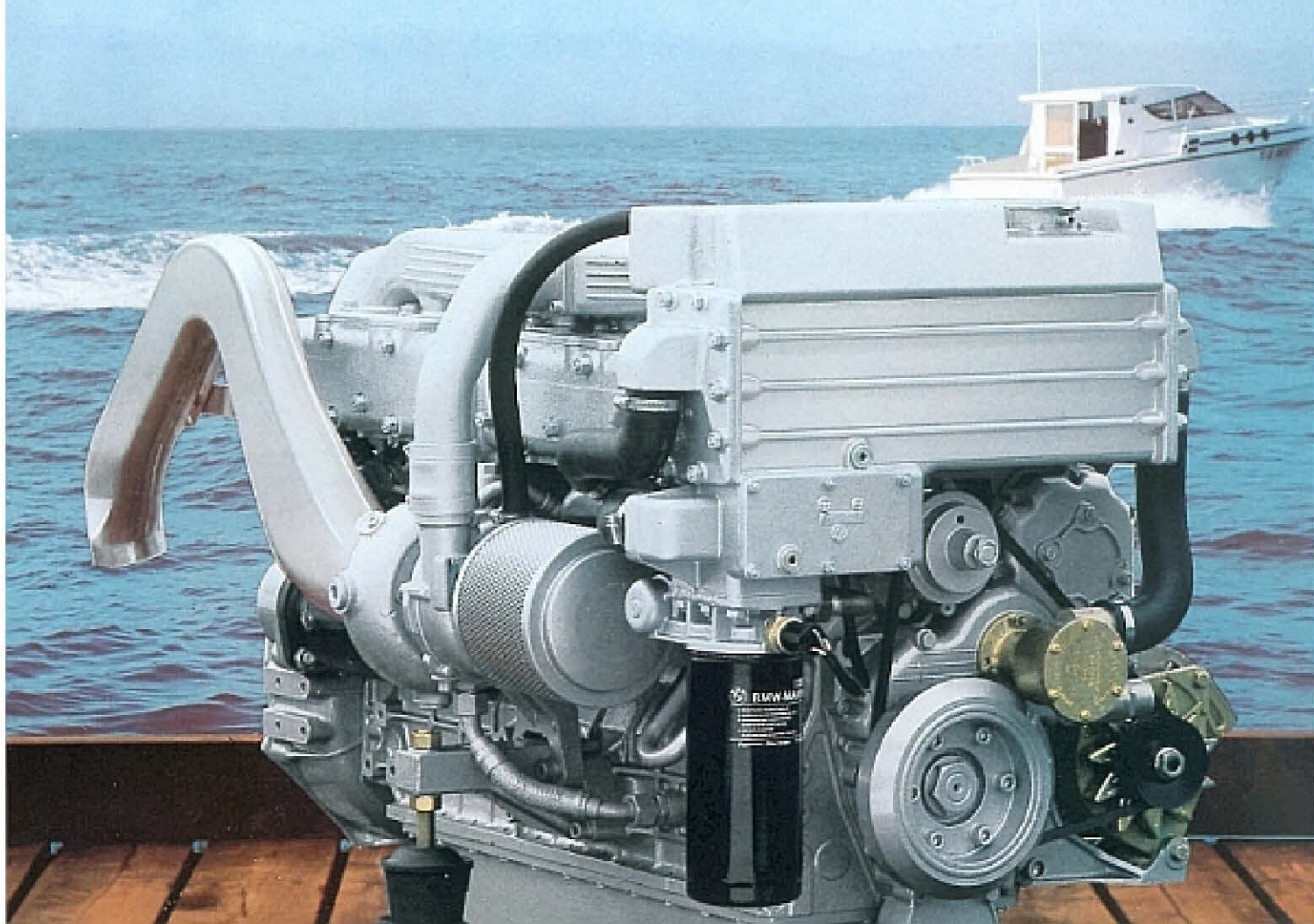
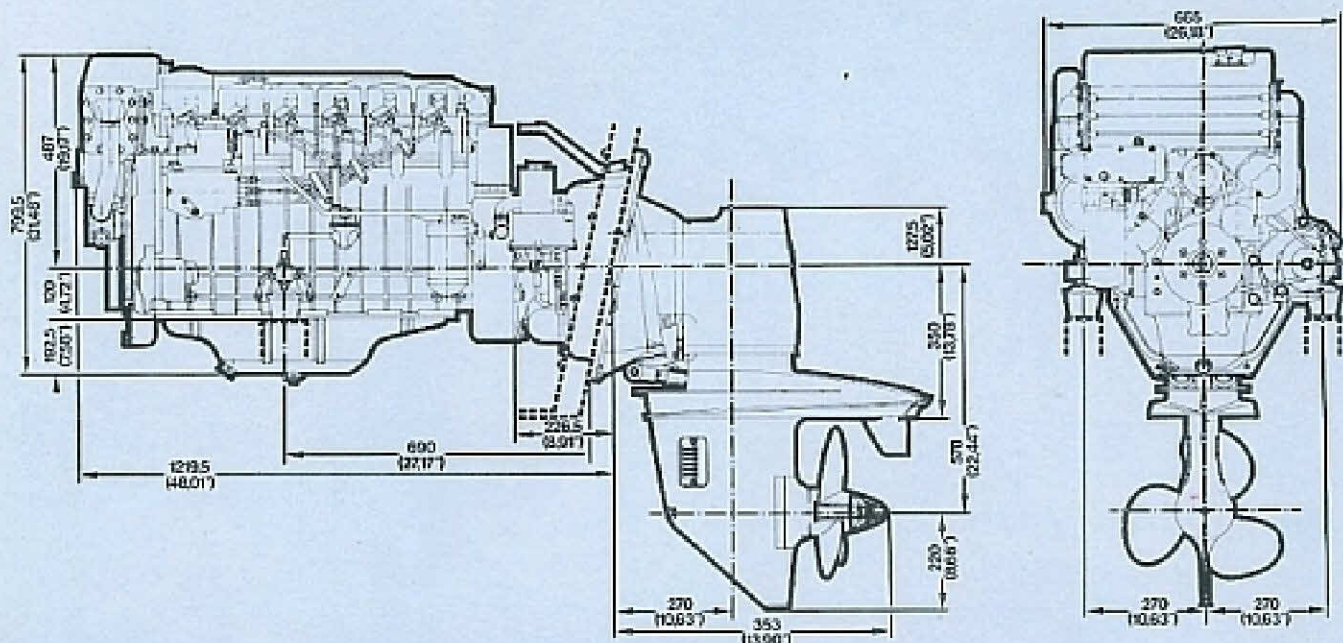


**For the man who wants more  
from his diesel:  
The D150 Turbo Diesel.  
By BMW.**



## Main dimensions



## Technical Data

### Engine Specifications D 150

Weight	Dry weight of engine only 385 kg (853 lb) Weight of stern drive including transom plate 74 kg (163 lb) Weight of complete unit 459 kg (1016 lb)
Design and Engine Bearings	6-cylinder inline engine with cylinders in upright position and inclined valves in parallel arrangement Crankshaft made of forged, heat-treated steel Dual-circuit cooling system: engine and raw water circuits operate independently 3-point suspension: adjustable at the front, ring-shaped engine mount at the rear
Cubic Displacement and Engine Output (per DIN 6270 B)	Displacement 3599 cc (219 cu in) Stroke 93 mm (3.54 in) Bore 92 mm (3.62 in) Max output 100 kW (136 hp) at 3800 rpm Max torque 250 Nm (213.7 ft-lb) at 3500 rpm Compression ratio 22:1 Wide open throttle neutral 4000 rpm
Operation	Four-stroke diesel engine with water-cooled exhaust supercharging
Valve Drive	Camshaft tappets and push rods located at the side of the engine block Valves in parallel arrangement
Lubrication	Forced-feed lubrication by Eaton pump, interchangeable oil filter, thermostat-controlled oil cooler
Fuel Supply System	Ultra-fine fuel supply filters with water separator, fuel pump with additional manual control, BOSCH injection pump, fuel injection nozzles, air filters
Engine Cooling	Dual-circuit cooling system with wet exhaust
Electrical System	MOTOROLA Alternator: 1000 VA, 14 V, 75 Amps BOSCH Starter: 12 V, 3 kW Electrical engine cut-off Heater plugs with automatic glow time control
Power Transmission	Heavy-duty elastic rubber coupling, double-universal joint
Stern Drive	Gear ratio 1.61:1 Max propeller diameter 16 in (400 mm) Max tilt angle $\pm 30^\circ$ Trailer position (removed from water) $40^\circ$ Electro-hydraulic trim/tilt system, trimable up to the max permissible engine speed of 3800 rpm
Design Features	Engine with complete wiring and multiple-plug connections, 6 m wiring harness 2-part instrument panel: 1. Tachometer with hour meter; voltmeter; water temperature gauge; trim indicator with warning light; ignition switch with key starter; charging control light; oil pressure control light; glow control; switch instrument light; electric motor stop switch; buzzer for oil, coolant and trim; fuses for starter and instrument light; dimensions: 261 x 149 mm 2. Oil pressure gauge; oil temperature gauge; dimensions: 76 x 149 mm Standard-mount oil sump pump Tool kit Raw water filter including connections and hoses
Special Equipment	Single lever gearshift and throttle control Steering systems Various instruments Subject to change in design and equipment

Your BMW Marine Dealer



© 1981  
BMW Marine GmbH  
Munich, West Germany

01 812 120 055  
8/81  
Printed in West Germany

