



[HOME](#) [BOATS](#) [CHARTERS](#) [SERVICES](#) [DIRECTORY](#)

[Print this boat](#) [Email a friend](#)



Truancy

### 37' Lord Nelson Victory Tug

- Year: 1983
- **Current Price: US\$ 158,000**
- Located In Anacortes, WA
- Hull Material: Fiberglass
- Engine/Fuel Type: Single Diesel
- YW# 74486-1684184

<a href="#">Photo Gallery</a>	<a href="#">Send Email</a>
<a href="#">Finance It</a>	<a href="#">Insure It</a>
<a href="#">Ship It</a>	

#### Additional Specs, Equipment and Information:

##### Builder/Designer

Builder: Victory

##### Dimensions

LOA: 37'  
Displacement: 20,500#  
Ballast: yes

LWL: 33'4"  
Draft: 3'6"

Beam: 13'2"  
Bridge Clearance: 12'6"

##### Engines

Engine(s): BMW  
Cruising Speed: 7.5

Engine(s) HP: 150  
Max Speed: 9.25

Hours: 1783

##### Tankage

Fuel: 300

Water: 185

Holding: 5



Salon

##### Accommodations

- Settee converts to double berth
- Stateroom forward features a double berth
- Raised pilothouse offers 360 degree visibility

##### Galley

- Magic Chef 3-burner LPG stove/oven
- Microwave
- Huge top loading 12v refrigerator
- Plenty of storage
- Stainless Sink



Galley

##### Electronics

- Furuno Radar
- GPS
- Apelco Loran-C
- Cetec Benmar Autopilot w/remote
- Apelco VHF
- Icom VHF
- Sandpiper Depthsounder
- Sitex Depthsounder

##### Electrical

- 2.5kw Yanmar Generator
- Wired for 30 amp shore power.
- Battery charger.
- 110v/engine hot water heater.
- Two 8-D batteries for house power and engine starting.

##### Deck

- 9' Hardbottom inflatable dinghy on stern davit w/10hp Nissan outboard
- Small sailing tender on davit above house
- Danforth anchor w/200' chain
- Muir 12v anchor windlass
- Canvas covers on dinghy, tender, windows, BBQ, etc. in good condition



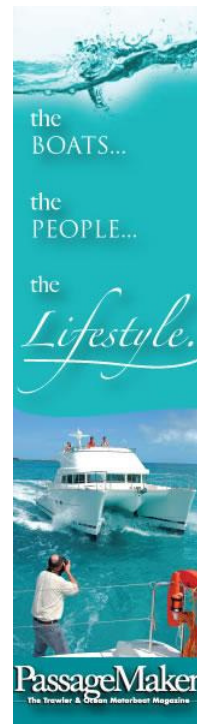
Pilothouse Aft

##### Additional

- Marine Hardware Bow Thruster
- Custom helm chair

##### Disclaimer

The Company offers the details of this vessel in good faith but cannot guarantee or warrant the accuracy of this information nor warrant the condition of the vessel. A buyer should instruct his agents, or his surveyors, to investigate such details as the buyer desires validated. This vessel is offered subject to prior sale, price change, or withdrawal without notice.





Pilothouse



Dinghy



Stern



Helm



Tronics



Helm console



Fwd Stateroom



Helm overhead



BMW 150HP



Head



Gear box



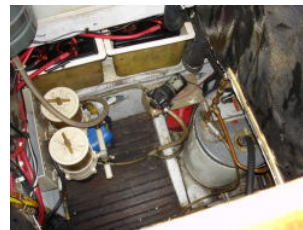
Engine room port side



Foredeck



Yanmar gen set



from above



Upper Deck

Last Revised: Jul 09, 2008



Contact [North Harbor Yacht Sales, Inc.](#)  
720 30th Street  
Anacortes, WA 98221 USA

**Toll-free**  
Tel

**877-303-1994**  
**360-299-1919**  
Fax 360-293-0728  
[Email us](#)

[contact us](#) | [help](#) | [about us](#) | [advertise with us](#) | [site map](#)  
YachtWorld.com, Lake Union Building, Suite 320, 1700 Westlake Avenue North, Seattle, Washington 98109,  
Facsimile 206.352.9406  
[copyright © 2008 Dominion Enterprises](#) All Rights Reserved. | [terms of use](#) | [privacy](#)